

EB-1/2/4 Terminal Boards

Type EB-4 (600 Volts - 30 Amperes)

Where a large amount of small wiring is necessary on the back of switchboard, the terminal boards listed below will be found very convenient for attaching the wires, not to exceed No. 8 in size. Molded-composition terminal boards make possible neat, compact arrangements on the back of the switchboard.

Type EB-1 and EB-2 (600 Volts - 100 Amperes)

Application

Where a high current rated block is necessary, such as in control power connections.

Description

The EB-1 is a one piece molded terminal board. Each is equipped with binding screws for circuit wire connections and a white marking strip for circuit identification. The EB-2 is of the same basic construction and dimensions as the EB-1 except that clamp (pressure) type connectors are furnished for circuit wire connections. Both the EB-1 and EB-2 will accommodate wires up to and including Number 4.

Type EB4

No. of Studs ¹	Catalog Number	Approx.Ship.Wt in lbs (each)	Dimension in inches (Fig.4)	
			A	B
2	2860351G1	¼	1¼	1¾
4	2860351G2	½	2½	1¾
6	2860351G3	¾	3¾	1¾

¹ Boards for more than six circuits to be made up of combinations of 2-, 4- and 6-stud boards.

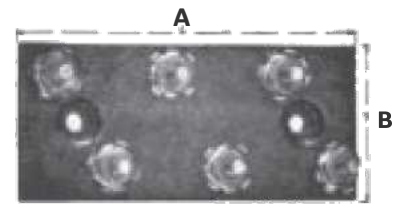


Fig. 4. 6-point terminal board, Type EB-4, Cat. 2860351G3



Fig. 5. EB-1 terminal board without cover.

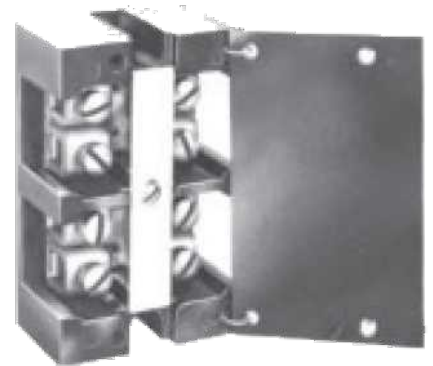


Fig. 6. EB-2 terminal board with cover.

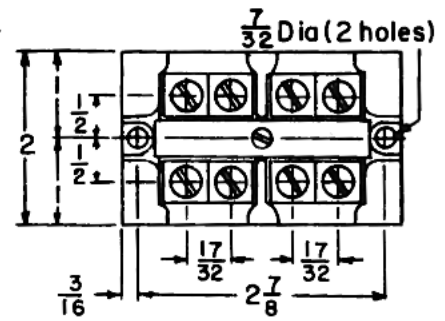
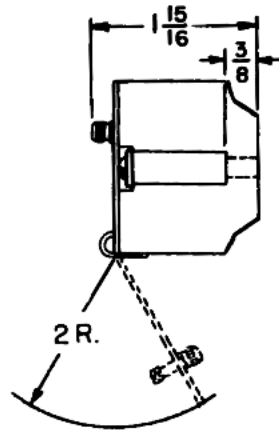
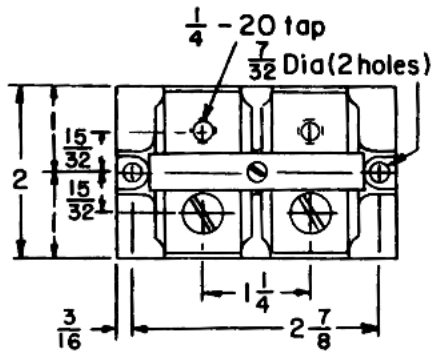
Type EB1 and EB2

No. of Circuits	Catalog Number	Type	Figure Number	Type of Connection	Cover
2	2648B903G-19	EB-1	7	(4) Screw	No
2	2648B903G-20	EB-1	7	(4) Screw	Yes
2	2648B903G-1	EB-2	8	(8) Pressure connector	No
2	2648B903G-3	EB-2	8	(8) Pressure connector	Yes

All EB-1 and EB-2 terminal boards furnished with white marking strip.



EB-1/2/4 Dimensions



Open Position of Cover
when furnished
(EB-1 & EB-2)

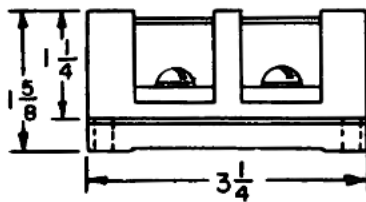


Fig. 7 Type EB-1

Note:
All dimensions in inches

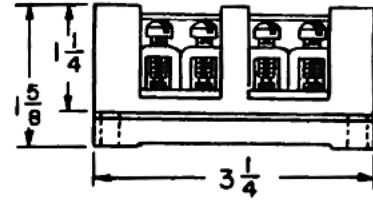


Fig. 8 Type EB-2

GEGridSolutions.com

Grid-AIS-L4-ITL_Model_EB_1.2.4-1572-2017_08-EN. © Copyright 2017. General Electric Company and Instrument Transformers LLC reserve the right to change specifications of described products at any time without notice and without obligation to notify any person of such changes.

Worldwide Contact Center

Web: www.GEGridSolutions.com/contact

Phone: +44 (0) 1785 250 070

USA and Canada: +1 (0) 800 547 8629

Europe, Middle East and Africa: +34 (0) 94 485 88 00

